

# GOLD LINE

IMAGINE THE CONNECTIONS



**Metro Gold Line Foothill  
Extension -  
Azusa to Montclair  
Scoping Meetings**

## FOOTHILL EXTENSION

METRO GOLD LINE FOOTHILL EXTENSION CONSTRUCTION AUTHORITY

January 2011

# Purpose of Tonight's Meeting

- Present a Project Overview
- Explain the Environmental Review Process and Purpose of Public Scoping Phase
- Provide an Opportunity for the Public to Ask Questions and Submit Comments

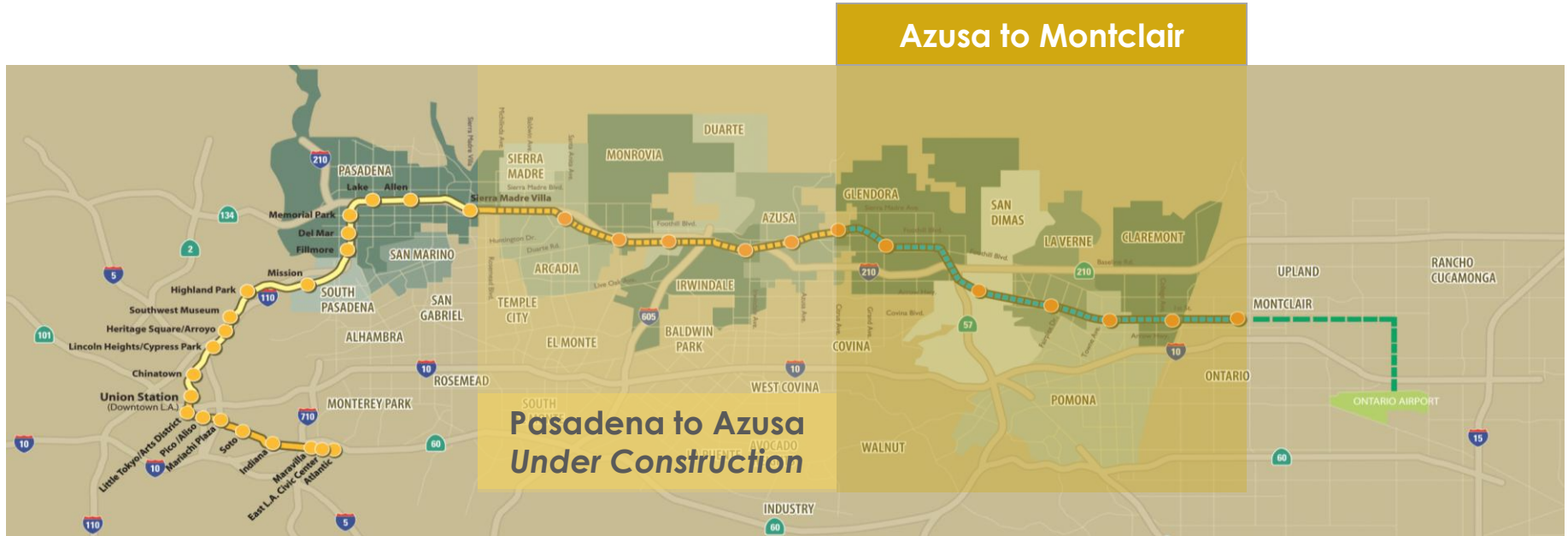
# Meeting Schedule

- **6:15 - 7:00 p.m.** – Presentation and Opportunity for Comments/Questions
- **7:00 – 8:00 p.m.** – Open House (talk one-on-one with project staff)

## 3 Ways to Provide Comments for the Record:

- Fill out a speaker card and speak during Q&A
- Complete a comment sheet
- Provide your comments to the court reporter

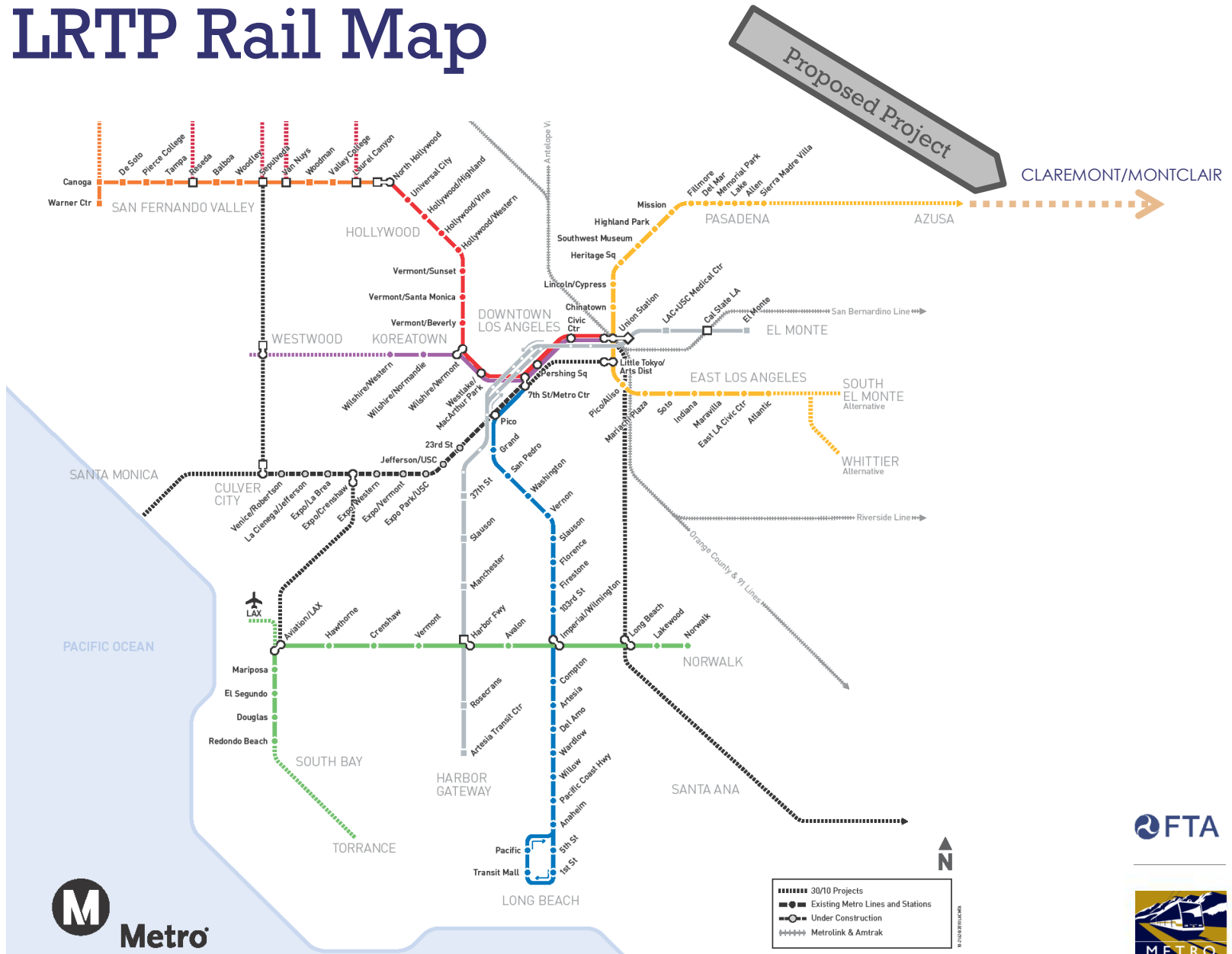
# Project Overview



## Metro Gold Line Foothill Extension - Azusa to Montclair

- 12.6 miles, 6 cities, 6 stations
- Two new grade-separated crossings to align light rail and freight tracks (at Lone Hill Ave - Glendora and Towne Ave - Pomona)
- Shared corridor (freight throughout, Metrolink from La Verne east)
- Partially funded through Measure R/needs additional funding

# 2009 LRTP Rail Map

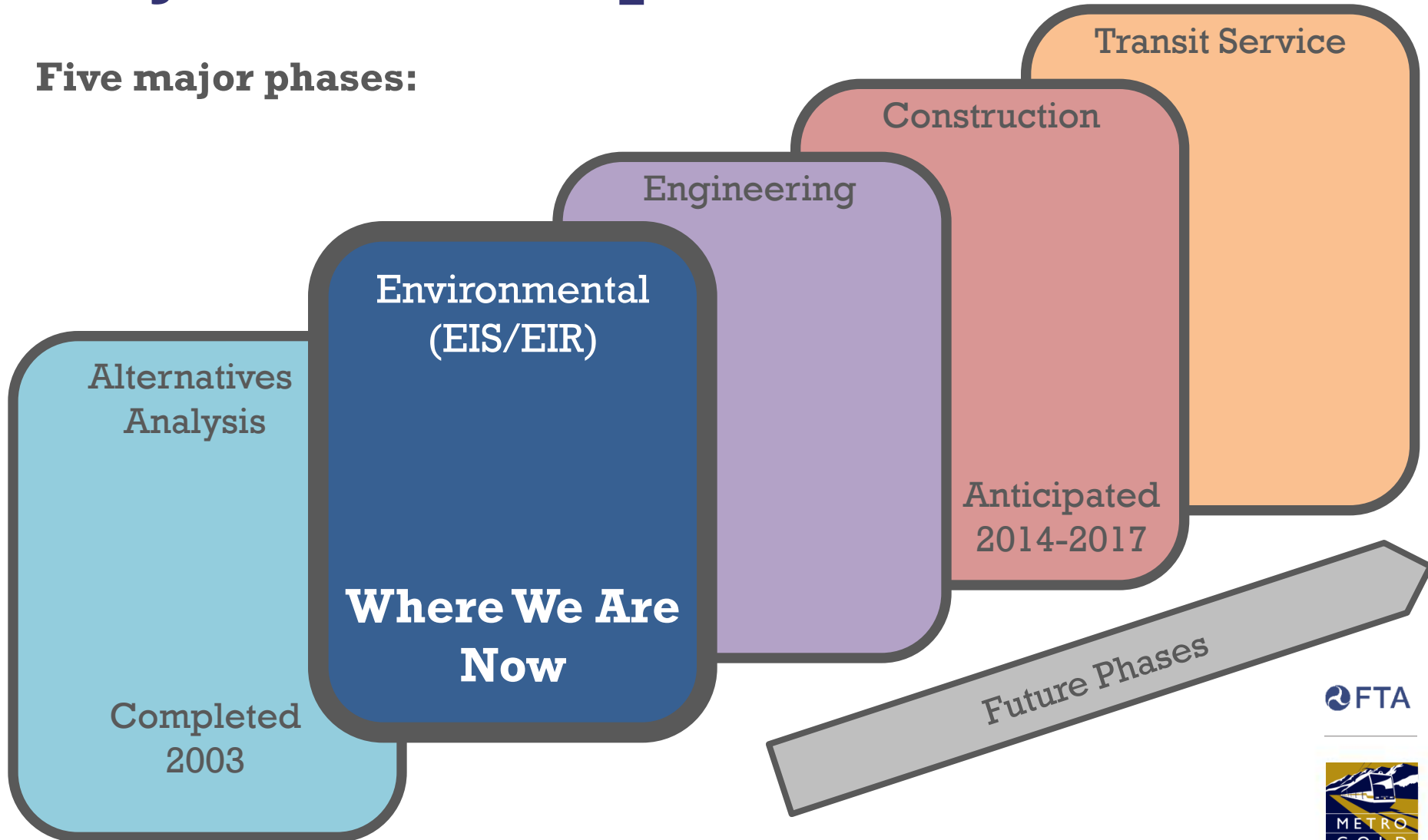


# Project History

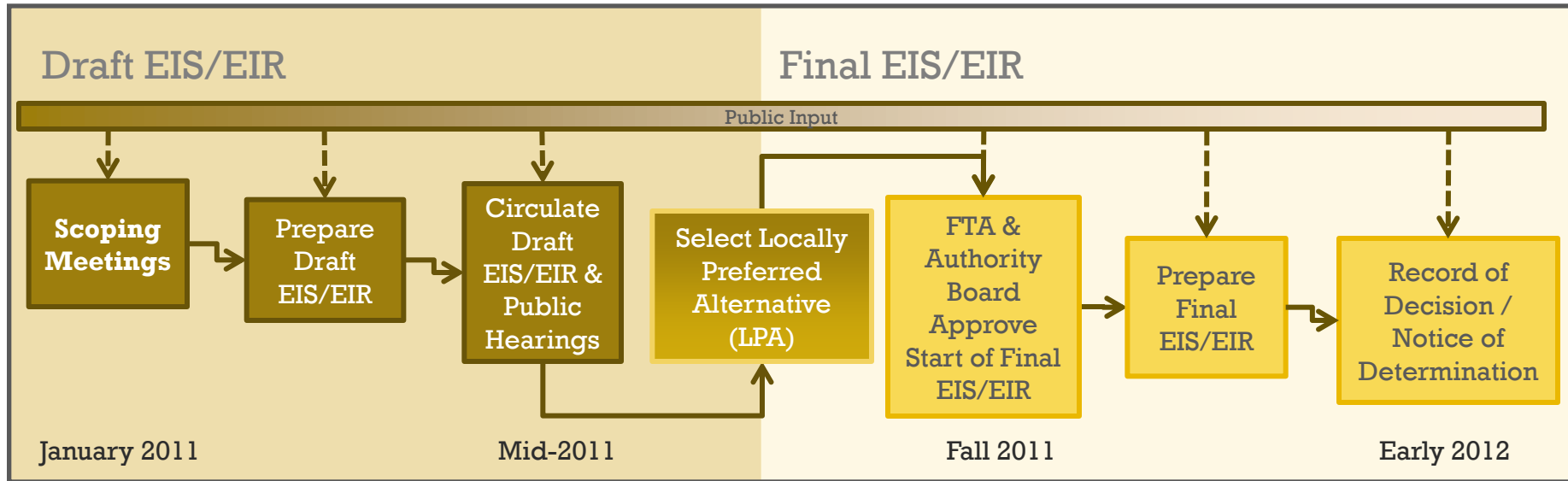
- **1999:** Metro Gold Line Foothill Extension Construction Authority created
  - SB1847 provided necessary powers to complete the project from Union Station to the LA County line
- **2003:** Alternatives Analysis initiated for Pasadena to Montclair segments
- **2004:** Circulated Pasadena to Montclair Draft EIS/EIR (selected LPA)
- **2005:** Board selected revised LPA
- **2007:** Pasadena to Montclair Final EIR completed/FEIR certified for Pasadena to Azusa only
- **2008:** Measure R approved, fully funding Pasadena to Azusa
- **2010:** ‘Fresh’ environmental review (EIS/EIR) for Azusa to Montclair initiated
  - NEPA – National Environmental Policy Act  
**Federal Transit Administration (Lead Agency)**
  - CEQA – California Environmental Quality Act  
**Construction Authority (Lead Agency)**

# Project Development Process

Five major phases:



# EIS/EIR Process



- **Draft EIS/EIR**
  - Define/refine alternatives
  - Study potential benefits/impacts of alternatives
  - Evaluate measures to avoid, minimize and mitigate impacts
  - Select a Locally Preferred Alternative (LPA)
- **Final EIS/EIR**
  - Respond to comments received during circulation of Draft EIS/EIR
  - Respond to potential engineering issues

# Purpose of Public Scoping

- Initiates NEPA and CEQA environmental clearance process
- Helps refine scope of environmental review by including public feedback on:
  - Proposed Project
  - Project Purpose and Need
  - Alternatives Under Consideration
  - Environmental Issues to be Studied in EIS/EIR

# Project Purpose and Need

## Need

- I-210 cannot accommodate current and forecasted peak-hour travel demand
- Bus and commuter rail service is limited in the corridor
- The corridor's arterial network is congested
- Area population and employment are forecasted to increase, worsening traffic

## Purpose

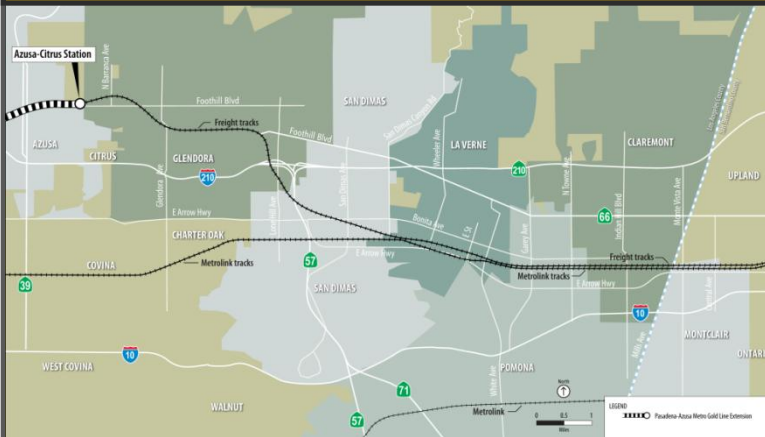
- Improve transit accessibility to major activity centers along the Gold Line
- Introduce more reliable transit service that shortens travel times
- Provide an alternative mode for commuters currently using I-210
- Enhance connections to Metrolink, and regional and local buses
- Encourage mode shifts to transit, reducing air pollution and greenhouse gas emissions

# Alternatives to be Studied

- No Build:
  - Study Area in 2035 if Project is not built
- Transportation Systems Management (TSM)
  - Improvement to the No Build featuring a ‘best bus’ alternative, signal synchronization and other non-capital improvements
- Build :
  - Light Rail extension of the planned Gold Line from Azusa (Citrus Ave) to Montclair (Central Ave) and serves six (6) new stations:
    - **Glendora**
    - **San Dimas**
    - **La Verne**
    - **Pomona**
    - **Claremont**
    - **Montclair**

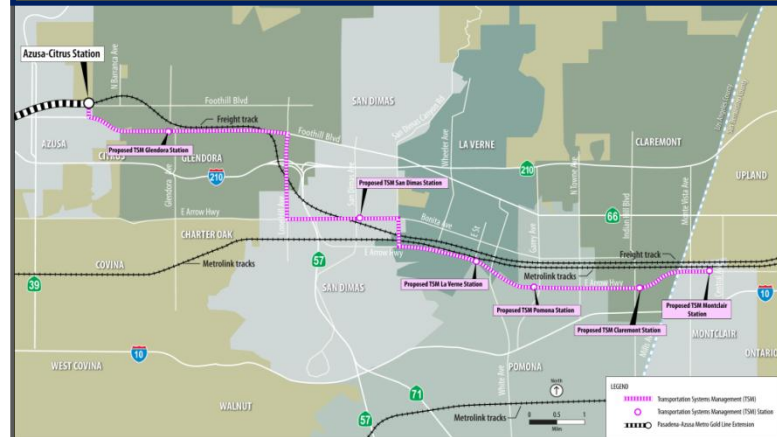
# No Build and TSM Alternatives

## No Build Alternative



- Represents the Study Area in 2035, if the Project is not built
- Includes all existing highway and transit routes, and the committed highway and transit projects specified in:
  - Southern California Association of Governments (SCAG) 2008 Regional Transportation Plan (RTP)
  - Metro 2009 Long Range Transportation Plan (LRTP)
- Includes the Pasadena – Azusa Extension, currently under construction (completion anticipated late 2014)

## TSM Alternative



- Includes:
  - Intersection improvements
  - Signal synchronization
  - Rapid bus line that resembles service of the Build Alternatives

# Build Alternative

## Proposed Metro Gold Line Foothill Extension — Azusa to Montclair



- Extends light rail 12.6 miles from Azusa to Montclair
- Operates on two light rail tracks next to freight track along the existing Metro-owned right-of-way, also currently used by Metrolink
- Six new stations in Glendora, San Dimas, La Verne, Pomona, Claremont, and Montclair

# Build Mode – Light Rail Transit (LRT)

## Light Rail Transit (LRT)

- **Electrically powered by overhead wires**
- **Vehicles can be linked together to accommodate up to 500 passengers per 3-car train**
- **Requires traction power substations every mile along tracks**
- **Example: Existing Metro Gold Line between Los Angeles and Pasadena**



# Environmental Topics

## Environmental Issues to be Studied in EIS/EIR

- **Traffic & Circulation**
- **Land Use & Development**
- **Real Estate & Acquisitions**
- **Communities & Neighborhoods**
- **Visual & Aesthetics**
- **Air Quality**
- **Noise & Vibration**
- **Ecosystems & Biological Resources**
- **Geotechnical/Subsurface/Seismic/  
Hazardous Materials**
- **Water Resources**
- **Energy**
- **Historical, Archaeological &  
Paleontological Resources**
- **Parklands & Community Facilities**
- **Economic Development & Fiscal**
- **Safety & Security**
- **Construction Impacts**
- **Growth Inducing Impacts**
- **Environmental Justice**
- **Climate Change**
- **Cumulative Impacts**

*Did we miss anything?*

# Ways to Provide Comments

## Tonight

- **Make a comment during Q&A**
- **Complete a comment sheet**
- **Provide comments to the court reporter**

## After Tonight

- **Comment by Mail:**  
Lisa Levy Buch  
Director of Public Affairs  
Metro Gold Line Foothill Extension  
Construction Authority  
406 E. Huntington Drive, Suite 202  
Monrovia, CA 91016
- **Comment by Email:**  
[llevybuch@foothillextension.org](mailto:llevybuch@foothillextension.org)

## Scoping Meetings:

- **Wednesday, January 12, 2011, 6-8 PM** - Ganesha Community Center, 1575 North White Avenue, Pomona
- **Thursday, January 13, 2011, 6-8 PM** - Glendora Teen and Family Center, 241 West Dawson, Glendora
- **Wednesday, January 19, 2011, 6-8 PM** - Oakmont Elementary School, 120 West Green Street, Claremont
- **Thursday, January 20, 2011, 6-8 PM** - Ekstrand Elementary School, 400 North Walnut Avenue, San Dimas

**Comments must be postmarked on or before February 2, 2011 to be made part of the Scoping Phase.**



# Meeting Schedule

- **6:15 - 7:00 p.m.** – Presentation and Opportunity for Comments/Questions
- **7:00 – 8:00 p.m.** – Open House (talk one-on-one with project staff)

## Open House - Information Stations:

- **Project Overview**
- **Environmental Review Process**
- **City/Station Concepts**
- **Comments**
- **Court Reporter**

**Your feedback is important! Please provide your comments before close of the comment period.**

# GOLD LINE

IMAGINE THE CONNECTIONS



[www.foothillextension.org](http://www.foothillextension.org)

## FOOTHILL EXTENSION

METRO GOLD LINE FOOTHILL EXTENSION CONSTRUCTION AUTHORITY